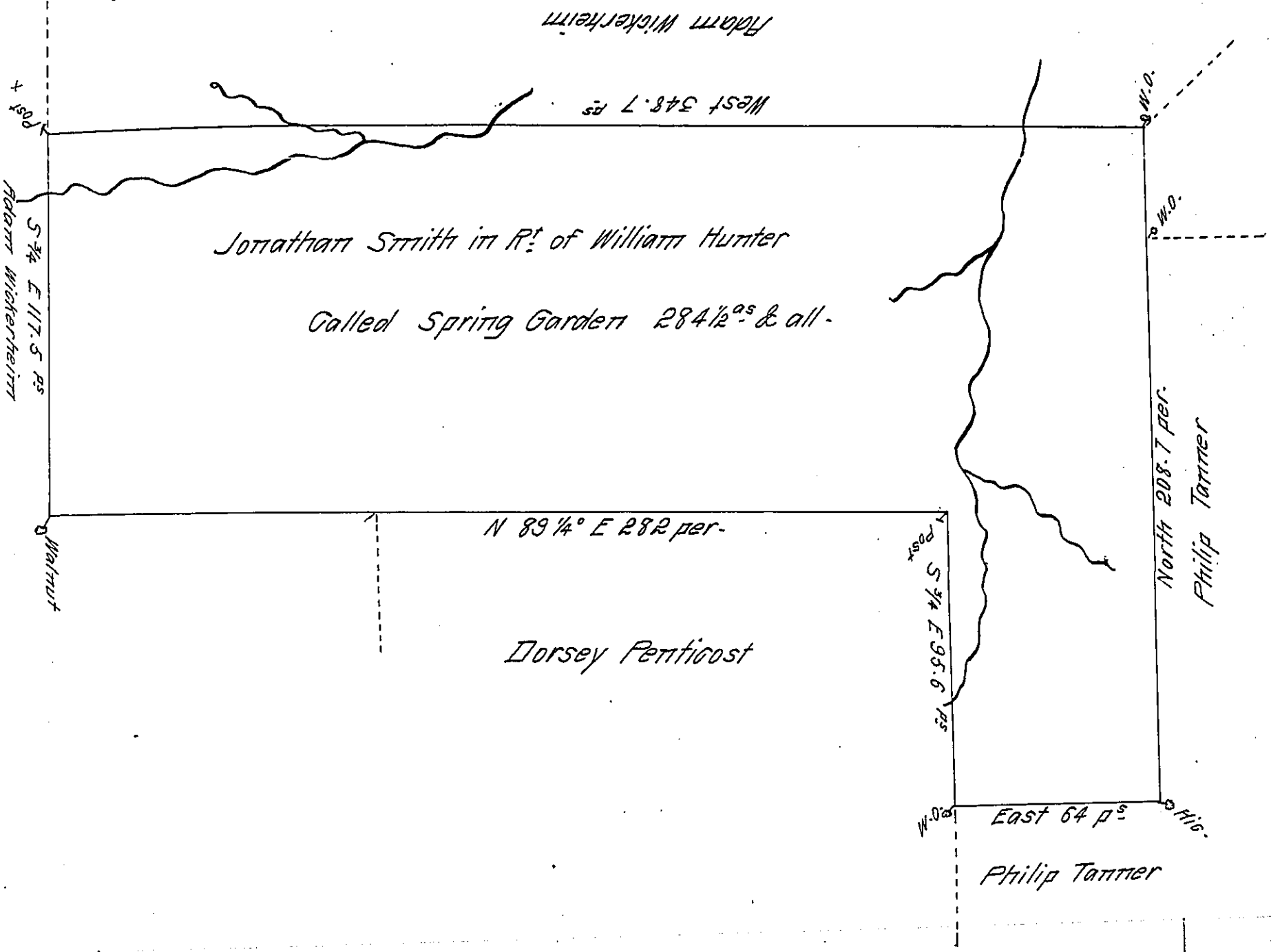


FORM NO. 1.



Situated on a Branch of Witte Millers run on the South Side of Yochio  
Geri River in the New purchase Bedford County & Survey'd the 6<sup>th</sup> day of  
 June 1770 By Order N<sup>o</sup> 2226 dated April 3<sup>d</sup> 1769.  
 By Alarie Dep<sup>t</sup> S<sup>r</sup>

To John Lukens Esq<sup>r</sup> }  
 Surveyor General }

IN TESTIMONY that the above is a copy of the original remaining on file in  
 the Department of Internal Affairs of Pennsylvania, made  
 conformably to an Act of Assembly approved the 16th day of  
 February, 1833, I have hereunto set my Hand and caused  
 the Seal of said Department to be affixed at Harrisburg,  
 this sixteenth day of May 1911

Nancy Houck  
 Secretary of Internal Affairs.